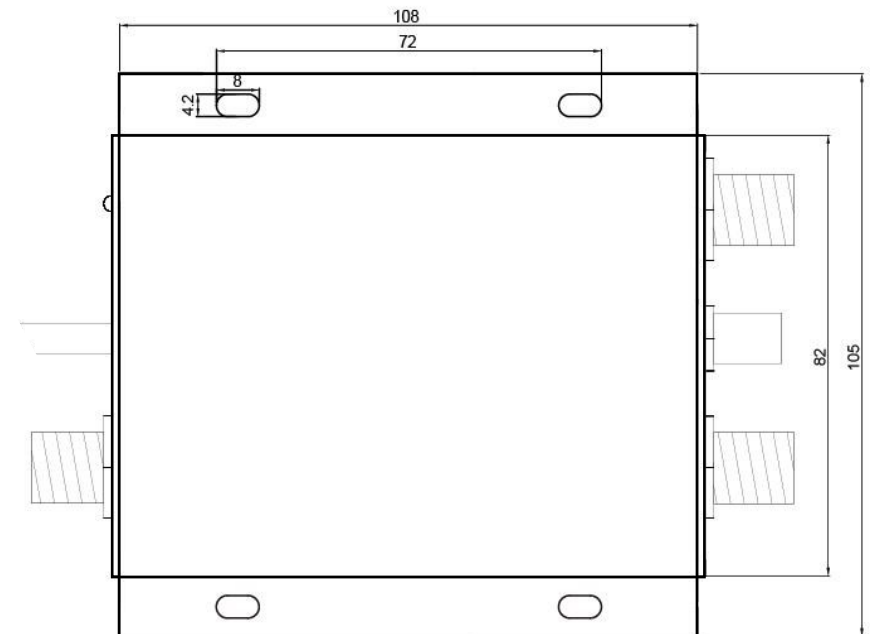


QK-A015-TX

ACTIVE AIS/VHF ANTENNA SPLITTER

BI-DIRECTIONAL -FOR USE WITH TRANSPONDERS



Disclaimer: This product is designed to aid navigation and should be used to augment normal navigational procedures and practices. It is the user's responsibility to use this product prudently. Neither Quark-elec, nor their distributors or dealers accept responsibility or liability either to the product user or their estate for any accident, loss, injury or damage whatsoever arising out of the use or of liability to use this product.

Email: info@quark-elec.com



This is an overview only. Familiarize yourself with the manual and the manuals of any connecting devices before installation. It is always recommended that electronic equipment be installed by an experienced installer.

Please note: The A015-TX is compatible with AIS transponders/transceivers.

(Though the A015-TX can be also be connected to AIS receivers, the A015-RX is sufficient for 'receive only' applications.)

INTRODUCTION

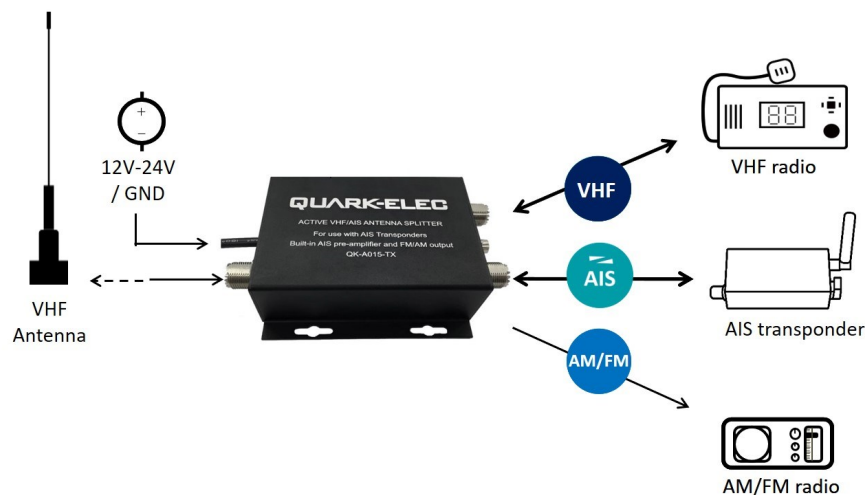
The QK-A015-TX active antenna splitter allows one VHF antenna to be shared between:

1. VHF radio
2. AIS transponder
3. AM/FM radio

Straight forward connection to all relevant devices, with no configuration required.

The A015-TX allows the one VHF antenna to provide:

- Reception of :
 - VHF radio
 - AIS messages
 - AM/FM radio.
- Transmission from:
 - VHF radio
 - AIS messages.

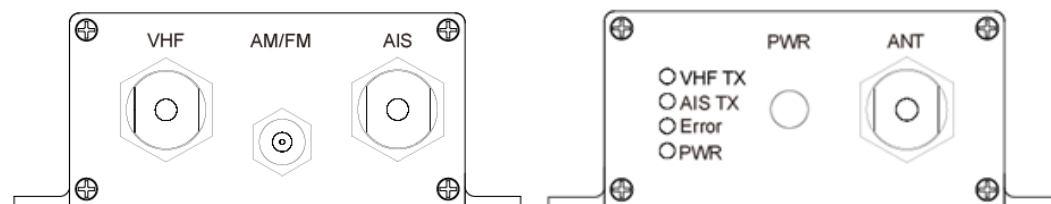


INSTALLATION

The A015-TX has five connections:

- **Power cable:** connect to 12V-24V DC power and GND
- **VHF Antenna:** SO239 connector for 2-way connection to VHF antenna
- **VHF radio:** SO239 connector for connection VHF radio
- **AIS:** SO239 connector for connection to AIS transponder
- **AM/FM:** BNC connector for the output of the FM/AM radio signal

The A015-TX is a plug and play device. No Configuration required.



Connect the VHF antenna before connecting other devices!

Connecting powered devices to a splitter without first connecting the VHF antenna will damage your devices. Follow the instructions below carefully and in the right order.

1. Remove power source from the A015-TX

2. Remove power source from all devices to be connected.



3. Connect the VHF antenna to the splitter before adding power or any devices.

4. Connect all other devices (unpowered) to the A015-TX (ie. VHF radio, AIS transponder and FM/AM radio)

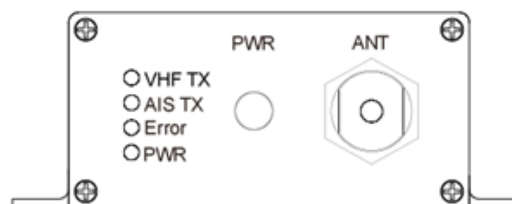
5. Power the A015-TX

6. Power all connected devices (ONLY do this AFTER following the above steps in the correct order).

7. Checking status LEDs light up when expected.

STATUS LEDS

The A015-TX has four LEDs that indicate power and the splitter's status.



- **VHF TX:** Transmitting VHF radio *
- **AIS TX:** Transmitting AIS
- **ERR:** Indicates errors *
- **PWR:** Indicates power *

***VHF fail-safe function** - VHF radio has full priority and will remain functional, even in the unlikely case that the Splitter would lose power or fail.