

QK-AS08-N2K Manual

3-Axis Compass & Attitude Sensor

with NMEA 0183, NMEA 2000 and USB output



Designed in UK



QK-AS08-N2K Features

- Three-axis solid-state compass
- Providing heading, rate of turn, and roll and pitch data in NMEA 0183, NMEA 2000 and USB ports
- Displays the heading data on the panel
- Up to 10Hz update rate for heading
- Super electromagnetic compatibility
- Enables 0.4° compass heading accuracy and 0.6° pitch and roll accuracy
- Calibratable to compensate for magnetic deviation caused by ferrous metals and other electromagnetic fields (very rarely required, we only provide this function to our authorised distributors)
- Low (<100mA) power consumption at 12V DC

Contents

1.	Introduction	3
2.	Installation	3
2.1.	Dimensions, mounting and location	3
3.	Connections	4
3.1.	Connecting AS08-N2K via USB for Windows configuration.....	5
3.1.1.	Will you need a driver to connect via USB?	5
3.1.2.	Checking the USB COM port (Windows)	5
3.2.	NMEA 2000 Output	6
4.	Configuration (via USB on Windows PC)	6
4.1.	NMEA 0183 wiring - RS422 or RS232?	7
5.	Data Output Protocols.....	8
6.	Specification.....	9
7.	Limited warranty and notices	9
8.	Disclaimer	9
9.	Document history	9
10.	For more info...	9

1. Introduction

The QK-AS08-N2K is a compact, high-performance gyro electronic compass and attitude sensor. It has an integrated 3-axis magnetometer, 3-axis rate gyro and, together with the 3-axis accelerometer, uses advanced stabilization algorithms to deliver precise, reliable heading and vessel attitude including rate of turn, pitch and roll readings in real time.

With solid state electronic technology and additional software, the AS08-N2K provides better than 0.4° heading accuracy through $\pm 45^\circ$ of pitch and roll angle and also better than 0.6° pitch and roll accuracy in static conditions.

The AS08-N2K has been pre-calibrated for maximum accuracy and super electromagnetic compatibility. It can be used out of the box. Simply connect it with a 12VDC power source and it will immediately start calculating the heading, pitch and roll data of the boat, and outputting this information via the USB, NMEA 0183 and NMEA 2000 ports. You can filter out this message type if not required (using the Windows configuration tool with AS08).

The AS08-N2K outputs the NMEA 0183 format data via USB and RS422 port. Users can easily connect it to their computer or NMEA 0183 listeners to share information with navigational software, chart plotters, autopilots, vessel data recorder, and dedicated instrument displays. The AS08-N2K can be connected directly with the NMEA 2000 backbone to share information with these chart plotters, autopilots and dedicated instruments via NMEA 2000 network.

The AS08-N2K can be connected to a NMEA 2000 interface, NMEA 0183 interface, or connecting both interfaces simultaneously.

2. Installation

2.1. Dimensions, mounting and location

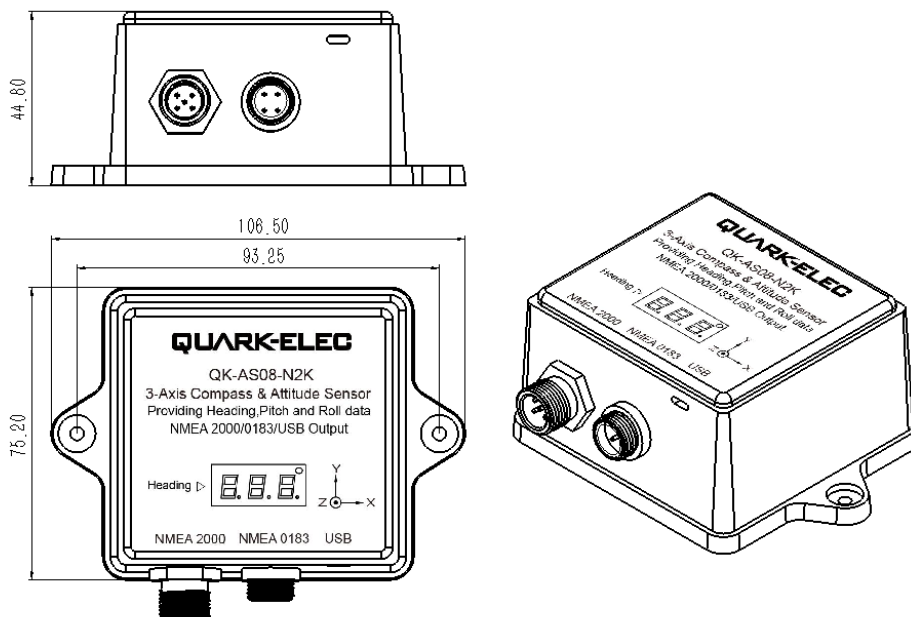


Figure 1 Dimensions

The AS08-N2K is designed to be securely positioned in an indoor environment. The AS08-N2K should be mounted to a dry, sturdy, horizontal surface. The cable can be routed either through the side of the sensor

housing, or through the mounting surface under the sensor.

For best performance, mount the AS08-N2K:

- As close to the vehicle/boat's centre of gravity as possible.
- To accommodate the maximum pitch and roll motions, mount the sensor as near to horizontal as possible.
- Avoid mounting the sensor high above the water line because doing so also increases pitch and roll acceleration
- AS08-N2K does not require a clear view of the sky.
- Do NOT install near ferrous metals or anything that can create a magnetic field such as: magnetized materials, electric motors, electronic equipment, engines, generators, power/ignition cables, and batteries. If you believe your AS08-N2K isn't accurate please contact your distributor to re-calibrate your device.

3. Connections

The AS08-N2K sensor has the following connections.

- **NMEA 0183 port and power.** A four-core M12 connector can be connected with the provided 2-meter cable. This can be connected to the NMEA 0183 listeners and the power supply. The user can use the configuration tool to setup NMEA 0183 output data type, baud rate and data frequency.

12V DC -via NMEA 0183 port needs to be connected to power up the AS08-N2K

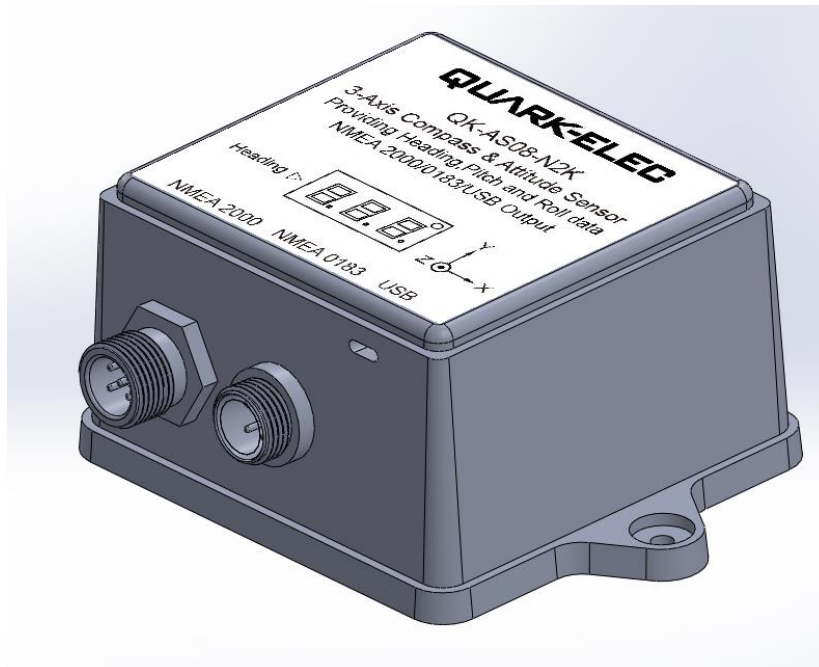


Figure 2 QK-AS08-N2K

Wire	Function
Red	12V
Black	GND
Green	NMEA output+
Yellow	NMEA output -

- **USB port.** The AS08-N2K is supplied with a type C USB connector. This connector is used to connect the AS08-N2K directly to a PC which allows for data transfer to the PC. This port is also used to configure and calibrate the AS08-N2K (The calibration function is only provided to authorised distributors).

The USB port can also be used to observe the target attitude with the configuration tool. The configuration tool provides vessel, aircraft and vehicle 3D models (dedicated GPU is needed for this function). If the 3D module is set as 'None', the NMEA 0183 format data will be sent out through USB and NMEA 0183 port simultaneously. The user can use any USB port monitor software (e.g. OpenCPN) to observe or record the data on PC or OTG (the baud rate should be set to 115200bps for this function).

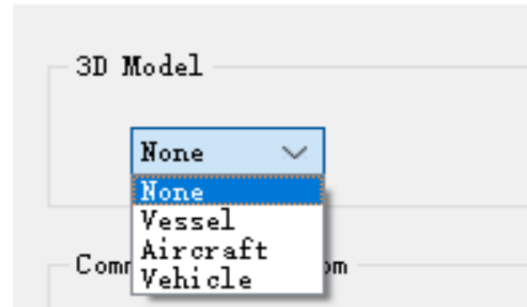


Figure 3: 3D Model

- **NMEA 2000 port.** The AS08-N2K sends the heading, ROT and status PGN messages through the NMEA 2000 bus to all connected devices.

The AS08-N2K can be simultaneously connected to both an NMEA 2000 network and an NMEA 0183 network, but it needs to be powered via an NMEA 0183 cable.

3.1. Connecting AS08-N2K via USB for Windows configuration

3.1.1. Will you need a driver to connect via USB?

In order to enable the USB data connection of the AS08-N2K, related hardware drivers may be needed, depending on your system requirements.

For Windows versions 7 and 8, a driver will be needed for configuration, but for Windows 10, the driver usually installs automatically. A new COM port will automatically show up in the device manager once powered and connected via USB.

The AS08-N2K registers itself to the computer as a virtual serial COM port.

If the driver does not install automatically, it can be found on the included CD and downloaded from www.quark-elec.com.

3.1.2. Checking the USB COM port (Windows)

After the driver is installed (if needed), run the Device Manager and check the **COM (port) number**. The port number is the number assigned to an input device. These can be generated randomly by your computer.

The configuration software will require a COM port number in order to access the data.

The port number can be found in Windows 'Control Panel>System>Device Manager' under 'Ports (COM & LPT)'. Find something similar to 'USB-SERIAL CH340' in the list for the USB port. If the port number needs to be changed for any reason, double click the icon in the list and select the 'Port Settings' tab. Click the 'Advanced' button and change the port number to the one required.

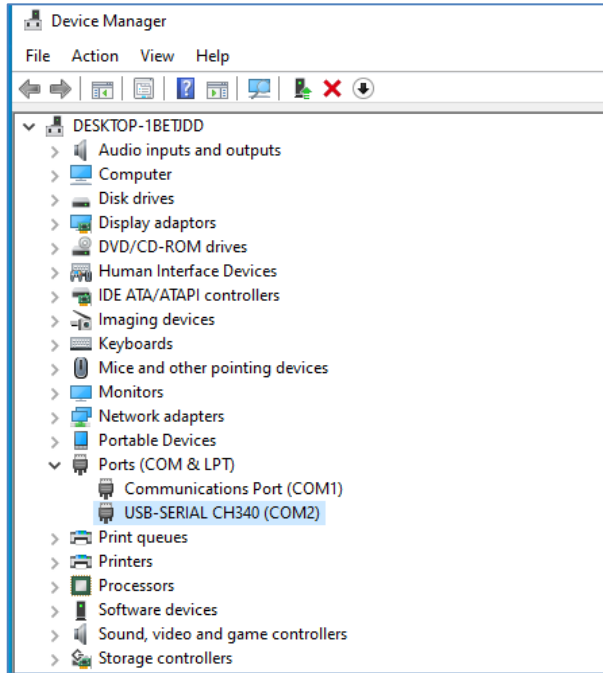


Figure 4: View of COM port in Device Manager

3.2. NMEA 2000 Output

The AS08-N2K provides a connection to an NMEA 2000 interface through a standard five pin male connector. It sends the heading, ROT, rolling, and pitch PGN messages to the NMEA 2000 bus simultaneously via the NMEA 0183 port. These messages can be shared with navigational software, chart plotters, autopilots, and dedicated instrument displays when connected to the NMEA 2000 bus.

4. Configuration (via USB on Windows PC)

The free configuration software is on the CD provided and is downloadable from www.quark-elec.com.

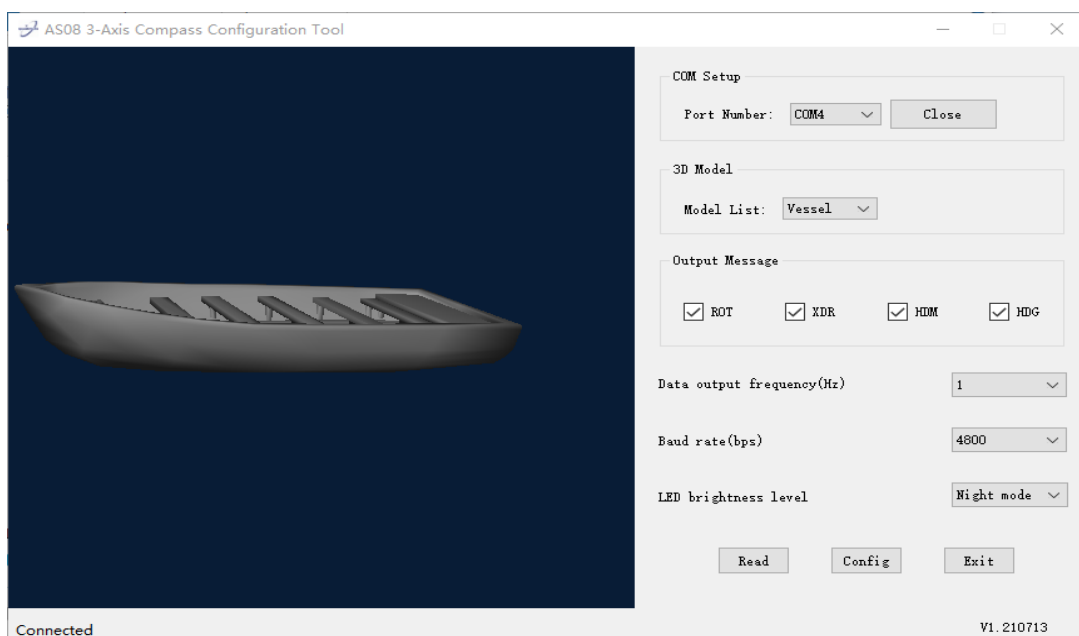
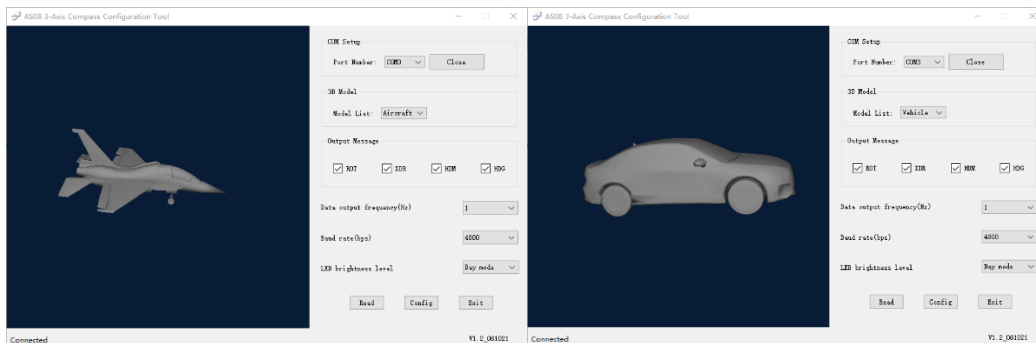


Figure 5: AS08-N2K 3-Axis Compass configuration Tool

1. Open the configuration tool
2. Select your **COM port number**
3. Click **'Open'**. Now, **'Connected'** will show on the bottom left side of the configuration tool and the configuration tool is ready to be used
4. Click **'Read'** to read the devices current settings
5. **Configure the settings as desired:**
 - **Select the 3D Model.** The configuration tool can be used to monitor the real time attitude of the object. The AS08-N2K has been designed for the marine market, but it can be used on vehicle or aircraft models. Users can choose a proper 3D module for their application. The real time attitude will be shown on the left-hand side window. Please note, some computers without dedicated GPU (Graphics Processing Unit) can't support this function.



If the NMEA 0183 format data needs to be output to any other third-party software/APP, 'None' should be selected here, the NMEA 0183 data will be sent out through the USB and NMEA 0183 ports simultaneously. The user can use any USB port monitor software to observe or record the data on PC or OTG (the baud rate should be set to 115200bps in this case).

- **Output messages** are set to transmit all data types as a default setting. However, the AS08-N2K has an internal filter, so the user can remove unwanted NMEA 0183 message types.
- **Data output frequency** is set to transmit at 1Hz (once per second) as default. Heading messages (HDM and HDG) can be set to 1/2/5/10 times per second. Rate of turn, roll and pitch can only be set at 1Hz.
- **NMEA 0183 baud rates.** 'Baud rates' refer to the data transfer speed. The AS08-N2K's output port default baud rate is 4800bps. However, the baud rate can be configured to 9600bps or 38400bps if required.

When connecting two NMEA 0183 devices, both devices' baud rates must be set to the same speed. Select the baud rate to match your chart plotter or connecting device.

- **LED brightness level.** The three-digit LED on the panel will show the real time heading information. The user can adjust the brightness for day or night use. It can also be turned off to save power.

6. Click **'Config'**. After a few seconds, your settings will now be saved and you can close the configuration tool.
7. Click **'Read'** to check that the settings have saved correctly before clicking **'Exit'**.
8. Remove the AS08-N2K power supply.
9. Disconnect the AS08-N2K from PC.
10. **Re-power the AS08-N2K to activate the new settings.**

4.1. NMEA 0183 wiring - RS422 or RS232?

The AS08-N2K uses the NMEA 0183-RS422 protocol (differential signal), however some chart plotters or devices may use the older NMEA 0183-RS232 protocol (single-ended signal).

For RS422 interface devices, these wires need to be connected.

	QK-AS08-N2K wire	Connection needed on RS422 device
NMEA 0183	NMEA output+	NMEA Input+ ^{*[1]}
	NMEA output-	NMEA Input-
POWER	Black: GND	GND (for Power)
	Red: Power	12v—14.4v Power

^{*[1]} Swap NMEA input + and NMEA input – wires if the AS08-N2K does not work.

Although the AS08-N2K sends out NMEA 0183 sentences via differential end RS422 interface, it also supports single end for RS232 interface devices, these wires need to be connected

	QK-AS08-N2K wire	Connection needed on RS232 device
NMEA 0183	NMEA output+	GND ^{*[2]}
	NMEA output-	NMEA Input
POWER	Black: GND	GND (for Power)
	Red: Power	12v—14.4v Power

^{*[2]} Swap NMEA input and GND wires if the AS08-N2K does not work.

5. Data Output Protocols

	NMEA 0183 output
Wire connection	4 wires: 12V, GND, NMEA Out+, NMEA Out-
Signal type	RS-422
Supported messages	<p>\$IHDG - Heading with deviation & variation. \$IHDM - Heading magnetic. \$IROT – Rate of turn(°/minute), '-' indicates bow turns to port. \$IXDR – Transducer measurements: Vessel attitude (pitch and roll).</p> <p>*XDR message example:</p> <p>\$IXDR,A,15.5,D,AS08-N2K_ROLL,A,11.3,D,AS08-N2K_PITCH,*3B</p> <p>where 'A' indicates transducer type, 'A' is for angle transducer. '15.5' is the roll value, '-' indicates roll to port. 'D' indicates the unit of measurement, degree. AS08-N2K_ROLL is the name of transducer and the data type. 'A' indicates transducer type, 'A' is for angle transducer. '11.3' is the pitch value, '-' indicates bow is below level horizon. 'D' indicates the unit of measurement, degree. AS08-N2K_PITCH is the name of transducer and the data type. *3B is the check sum.</p>

	NMEA 2000 output
Wire connection	5 wires: Data+, Data-, shield, 12V, GND. * AS08-N2K need 12V via NMEA 0183 port, not NMEA 2000.
Supported messages	PGN 127250 – Vessel Heading, converted from HDG sentences PGN 127251 – Rate of Turn, converted from ROT sentences

	<p>PGN 127257 – Attitude (pitch and roll), converted from XDR sentences.</p> <p>To filter any of above PGNs, the related NMEA 0183 sentences should be disabled via the configuration tool.</p>
--	---

6. Specification

Item	Specification
Operating temperature	-5°C to +80°C
Storage temperature	-25°C to +85°C
AS08-N2K Power supply	12 VDC (maximum 16V)
AS08-N2K supply current	≤80mA (day light LED)
Compass accuracy (steady conditions)	+/- 0.2°
Compass accuracy (dynamic conditions)	+/- 0.4° (pitching and rolling up to 45°)
Roll and pitch accuracy (steady conditions)	+/- 0.3°
Roll and pitch accuracy (dynamic conditions)	+/- 0.6°
Rate of turn accuracy	+/- 0.3°/second

7. Limited warranty and notices

Quark-elec warrants this product to be free from defects in materials and manufacture for two years from the date of purchase. Quark-elec will, at its sole discretion, repair or replace any component that fails in normal use. Such repairs or replacement will be made at no charge to the customer for parts and labour. The customer is, however, responsible for any transportation costs incurred in returning the unit to Quark-elec. This warranty does not cover failures due to abuse, misuse, accident or unauthorised alteration or repairs. A returns number must be given before any unit is sent back for repair.

The above does not affect the statutory rights of the consumer.

8. Disclaimer

This product is designed to aid navigation and should be used to augment normal navigational procedures and practices. It is the user’s responsibility to use this product prudently. Neither Quark-elec, nor their distributors nor dealers accept responsibility or liability either to the products user or their estate for any accident, loss, injury, or damage whatsoever arising out of the use of or liability to use this product.

Quark-elec products may be upgraded from time to time and future versions may therefore not correspond exactly with this manual. The manufacturer of this product disclaims any liability for consequences arising from omissions or inaccuracies in this manual and any other documentation provided with this product.

9. Document history

Issue	Date	Changes / Comments
1.0	21/07/2021	Initial release
1.01	06/10/2021	Support pitch and roll data in XDR sentences
1.1	30/10/2021	Support NMEA 2000 output (AS08-N2K version)
	09/11/2021	

10. For more info...

For more technical information and other enquiries, please go to the Quark-elec forum at: <https://www.quark-elec.com/forum/>

For sales and purchasing information, please email us: info@quark-elec.com

QUARK-ELEC

Quark-elec (UK)

Unit 7, The Quadrant, Newark Close
Royston, UK, SG8 5HL
info@quark-elec.com